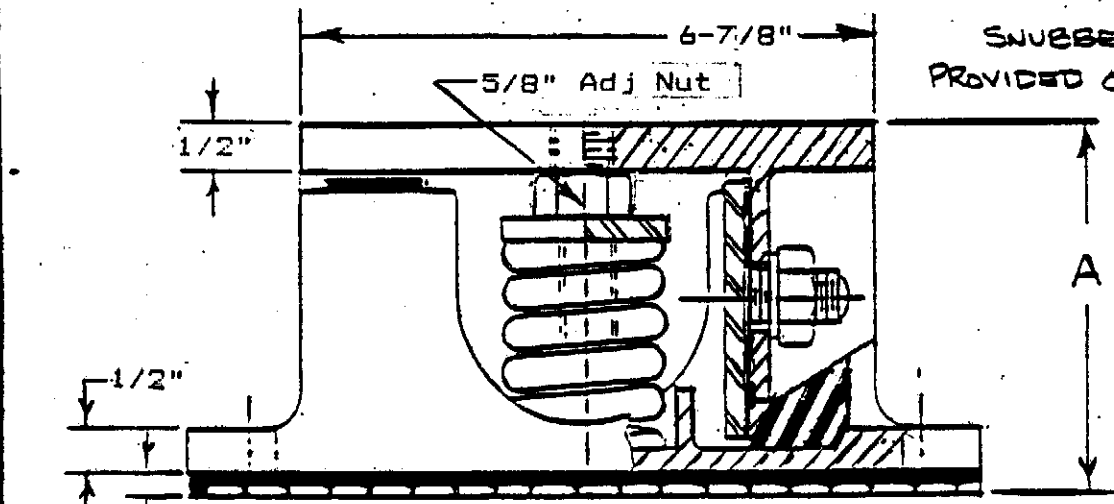


ISOL. NO.	RATED LOAD		"A" MIN. FREE HT.
	STEADY	IMPACT	
C I 2-1	250	---	6-1/2"
C I 2-2	400	---	
C I 2-3	600	---	
C I 2-4	1000	---	
C I 2-5	1400	---	
C I 2-6	2400	---	
C I 2-S5	650	520	5-1/8"
C I 2-S6	900	720	
C I 2-S7	1200	960	
C I 2-S8	2200	1650	
C I 2-S9	2600	2450	5-1/2"



ADJUSTABLE  
 SNUBBERS NOT  
 PROVIDED ON TYPE "60"

1/4" Sound Pad

UNLESS INDICATED  
 DECIMALS  
 FRACTION  
 ANGLES  
 RMS FINISH  
 ORD NO.  
 SCALE \_\_\_\_\_

ASSEMBLY  
 ISOLATION TECHNOLOGY  
 TYPE CI-2 W/  
 INTERNAL ADJUSTMENT

ISOLATION TECHNOLOGY INC.  
 P.O. BOX 480  
 MASSAPEQUA, N.Y. 11758

032290-3

NO. REVISION DATE